



# LONDON UNDERGROUND LIMITED SAFETY BULLETIN

LUSEA Ref. No.: N/A	No.: 4 in 2013	Date of Incident: 2 <sup>nd</sup> November 2012
Location: System Wide		Date of Issue: 26 March 2013
Author: Anna Robson		Expiry Date: 26 March 2014
Authorising SQE General Manager: Catherin Behan		Review Date(s): 30 September 2013

For enquiries on this Alert, contact: **ANNA ROBSON, AUTO 59457.**

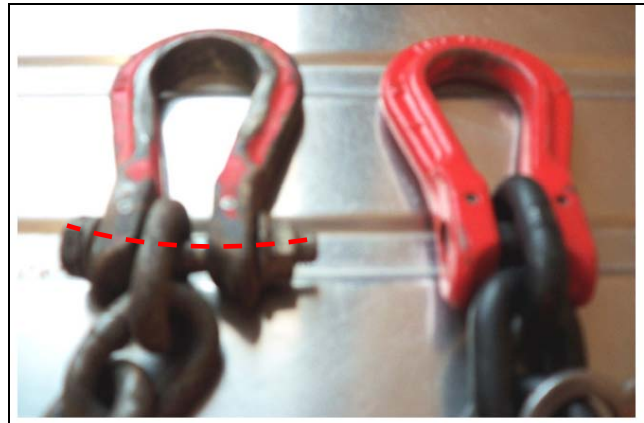
## Safe Use of Excavator Mounted Vibrators

The investigation into an incident at Barkingside where a pile was dropped when being lifted identified the following:

- The system of work being used was incorrect,
- Key personnel were not fully conversant with the correct use and operation of the excavator mounted vibrators used in piling activities.
- The limitations of the excavator mounted vibrators were not understood.

When lifting the pile into position the pile **MUST** be held by the pitching chain. The pile should **NOT** be lifted by the vibrator clamps. The vibrator clamps should only be used when piling as they unsuitable for lifting the pile.

This equipment can suffer significant wear and tear in use and should be inspected regularly in accordance with manufacturers instructions (i.e. bent bolt in pitching chain shown below).



### ACTION:

Project Teams should seek assurance from suppliers or satisfy themselves that:

- Specialist or non standard attachments are compatible with the equipment/machine intended for use.
- All Plant and equipment is subject to appropriate in date testing and inspection and records are held.
- Plant Approval for equipment and any attachments is current and in place.
- Key personnel involved have been fully trained and briefed by the manufacturer on the correct use and limitations of the equipment and components for the proposed work activity.
- The Safe Method of Work and Risk Assessment identify and document the correct processes, actions and control measures including communication, for planning and executing the works.

**PLEASE COMMUNICATE THIS SAFETY BULLETIN TO YOUR TEAMS, PROJECTS & SUPPLIERS**

#### Distribution:

John Adams, Catherine Behan, Tom Breen, Martin Brown, Jill Collis, Mark Grey, Phil Hufton, Ian Calland, Marian Kelly, Diarmaid O'Tuathail, Mike Strzelecki, TAC Managers, David Waboso, George Clark, CPD teams, Simon Peacock, APD teams, Mark Moore