



# LONDON UNDERGROUND LIMITED

## SAFETY BULLETIN

IRF Ref. No.: -	No. 12 in 2013	Date of Incident: 27 July 2013
Location: All LU sites		Date of Issue: 31 July 2013
Author: Paul Lambe		Expiry Date: 30 January 2013
Authorising HSE GM: Catherine Behan		Review Date(s): 30 January 2013

For enquiries on this safety bulletin, contact: **Paul Lambe**

## Platform to Track Access/Egress

### BACKGROUND:

Following two recent incidents in the Track Delivery Unit where workers received injuries when either going onto or leaving the track, all persons accessing the track are reminded that the track must be accessed via fixed or temporary steps as shown in figure 1-3 below:



Fig 1

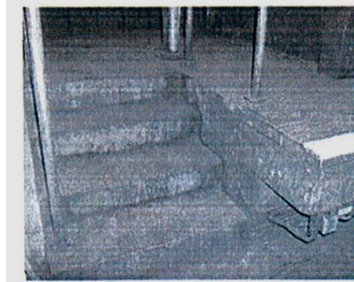


Fig 2



Fig 3

If none of the above are available, then follow the instructions below



Walk up to the headwall  
Stand facing the pit 1 meter away from the edge of the platform



Sit on the platform with your legs pointing towards the edge of the platform (if necessary use the head wall to steady yourself when sitting down)



Ease yourself forward slowly until your knees hang over the edge of the platform



Stand up slowly using the head wall to steady yourself

**PLEASE COMMUNICATE THIS SAFETY ALERT TO YOUR TEAMS, PROJECTS & SUPPLIERS**

#### Distribution:

John Adams, Charles Mills, Carl Devlin, Miles Ashley, Catherine Behan, Trevor Bellis, Tom Breen, Martin Brown, George Clark, Jill Collis, Andy Eastaugh, Mark Grey, Anne Hadjiry, Stuart Harvey, Philip Hufton, Neil Hyde, Marian Kelly, George McNulty, Diarmaid O'Tuathail, Kevin Payne, David Waboso, Ralph Freeston, John Hardy, Richard Jones, Peter Lynch, Simon Newton, Paul Nicholls, Graeme Shaw, Graham Sims, David Sockett, TAC Managers, LUCAS team, Ian Calland, George McNulty, Simon Peacock, Mark Moore, Adam Davis, Cathy Hunsley, Tom Breen CPD and AP teams, Paul Hatwell