

Northern Line Extension

BI-MONTHLY UPDATE

November - December 2016

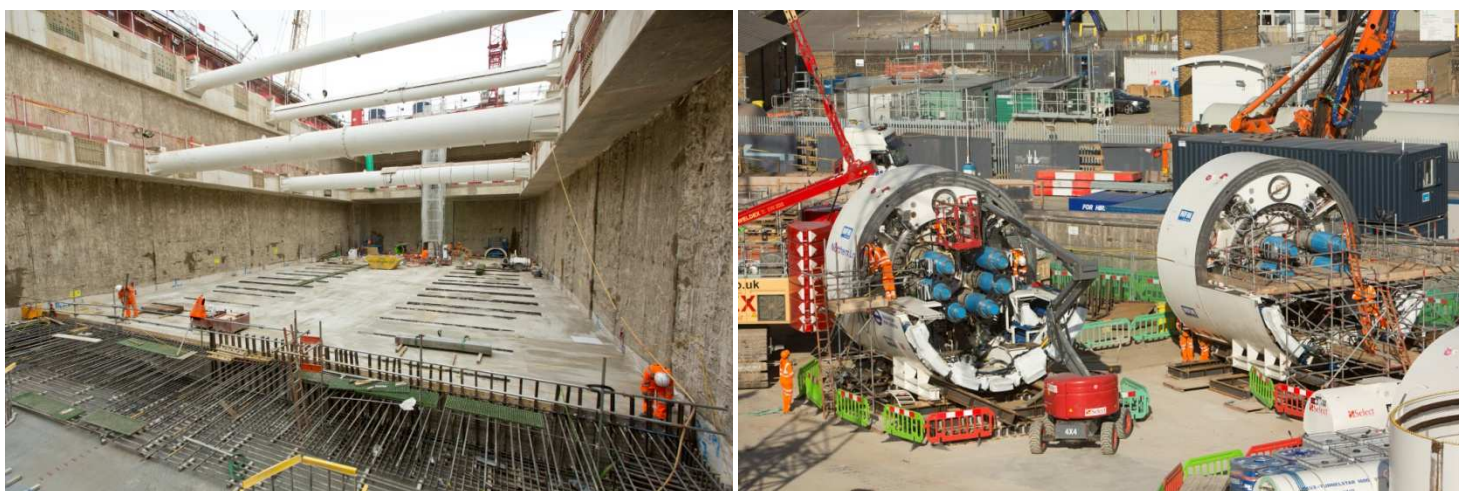
NLE Battersea Power Station

Thank you for your patience whilst we continue with the Northern Line Extension (NLE) works near you. We would like to update you on where we are and what is planned for the next four to eight weeks.

What has been completed:

A huge amount of progress has been made on the NLE Battersea Power Station site as the crossover box phase of works draw to a close. The excavation has been completed, forming a very steep slope, strengthened by soil nails which creates enough room for the tunnelling operations to commence. Over 1000m³ of concrete has been placed in the base slab to date. This is pictured below. The reinforced concrete lining walls have also been poured at the Eastern end of the crossover box to strengthen the wall.

The first stage of tunnelling has commenced using large drills to core through the 1.2m thick diaphragm wall constructed 12 months ago, working to expose the London Clay behind the wall. On the surface at the eastern end of the site, the two Tunnel Boring Machines (TBMs) have been assembled, with each element being delivered from Lyon in France. At present both shields (the front part of the machine) are 95% assembled, with this process pictured below. This work has involved a huge amount of welding and lifting operations using a 250T capacity crane. This work has predominantly taken place within large temporary white tents, sheltered from the weather.



Between the crossover and station box, a temporary bridge has been constructed in line with the traffic site entrance to help facilitate site logistics over the months ahead. The approach ramps to this bridge have been constructed. Further west in the station box, the 100TH diaphragm wall panel has been constructed and the bored piles are ongoing.

What is planned:

In November the crossover box ground floor base slab will be completed and the area fully handed over to the Sprayed Concrete Lining (SCL) Tunnel team, fulfilling this milestone in little over 12 months since permanent works commenced. This technique (which is pictured below in use at the Northern Line Extension Site at Kennington Green) will be used to form two tunnels 80m long to the east of the site, from within which the TBMs will be launched in 2017. This work marks the start of 24/7 working, however works at night are principally underground and are not likely to cause disturbance.



On the surface, the TBM backup elements will be delivered and assembled. Cranes will start to lift steelwork into the crossover box as part of the TBM conveyor system.

Within the station box, the bored piling works will be completed before Christmas. Diaphragm walling works will be ongoing into 2017, and further sections of capping beam are to be constructed adjacent to the railway. Prior to the Christmas holidays, just west of the new temporary site bridge, Sheet Piles will be installed using the silent press method, which will not cause any undue noise or vibration.

Please note the Northern Line Extension works at Battersea will close down for the **Christmas period from 23 Dec at 18.00 until Tuesday 03 January 2017.**

Our core hours:

0800 to 1800 Mondays to Fridays and 0800 to 1300 on Saturday. Tunnelling Works 24/7

Your feedback is important to us. Please do get in touch if you have any questions about the NLE works.

If you would like to be added to the mailing list, please contact us at nle@tfl.gov.uk or call our 24/7 helpdesk on 0343 222 2424 (Option 1)