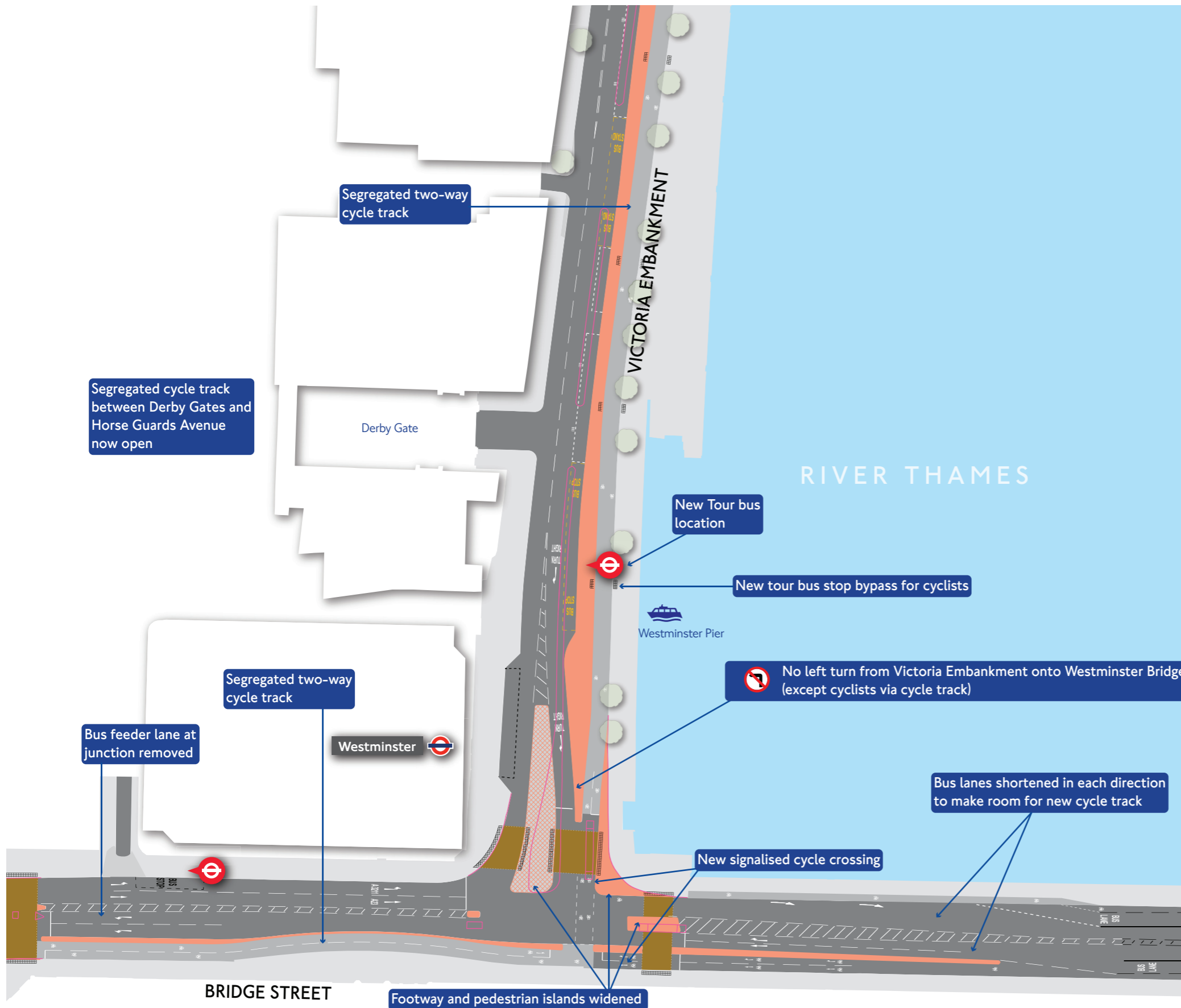


East-West Cycle Superhighway Victoria Embankment/ Westminster Bridge



Key:

- East-West Cycle Superhighway
- Existing footway or traffic island
- New footway or traffic island
- Overrun/flush area
- Existing kerbline removed
- Signalised pedestrian or pedestrian/cycle crossing
- Bus stop
- Underground station
- Pier
- Existing road markings
- New road markings
- Existing tree

WESTMINSTER BRIDGE