

# Northern Line Extension

## PROGRESS UPDATE

December 2019 – March 2020

### NLE Nine Elms Station

Thank you for your patience whilst we continue with the Northern Line Extension (NLE) works near you. We would like to update you on where we are and what is planned.

#### What has been completed:

The third and final escalator bank was lowered and installed at the NLE Nine Elms station at the end of November. They will transport passengers from the ticket hall entrance at ground level to the platform. In January, Otis, our onboard specialist contractor completed the line and levelling of the escalators meaning they are now in their final precise location. See fig. 1. In addition, the lift installation, carried out by Kone is now complete. Passengers can also access this facility from the ticket hall main entrance.

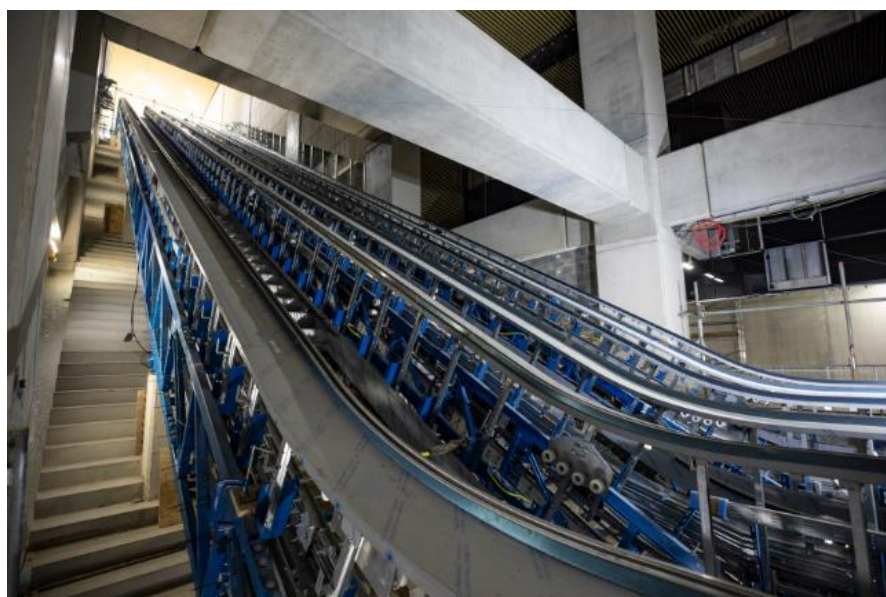


Fig. 1 Escalator Installation



Fig. 2 Traction substation room

Power was officially switched on by UKPN in December following the electrical connection of the new transformers located in the station's distribution network operator room. This milestone will now enable the team to 'energise' other rooms and areas of the station where equipment is being used and allow for the future testing and commissioning phase to take place. Figure 2 shows the equipment that has been installed so far in the traction substation room. The temporary substations previously used are no longer required and will be removed in Spring.

Fit out works within the station itself have accelerated this last quarter. The provision of vast amounts of containments and trays, installed by the M&E (mechanical and electrical) team, has enabled the completion of over 95% of the cable management works and 85% of the internal pipework.

Tiling works are ongoing throughout the platform level and tunnel ventilation systems are being installed.

You may have noticed the transformation of the front of the site which is fast resembling the contemporary station entrance. The dark stone cladding is complete, the glass panels are in situ and the canopy glazed façade with the TfL logos (roundels) is visible from Wandsworth Road. See fig. 3 below.

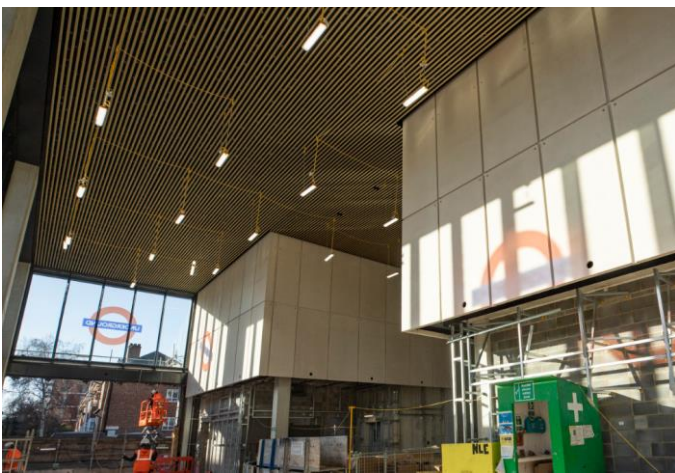


Fig. 3 Nine Elms Station

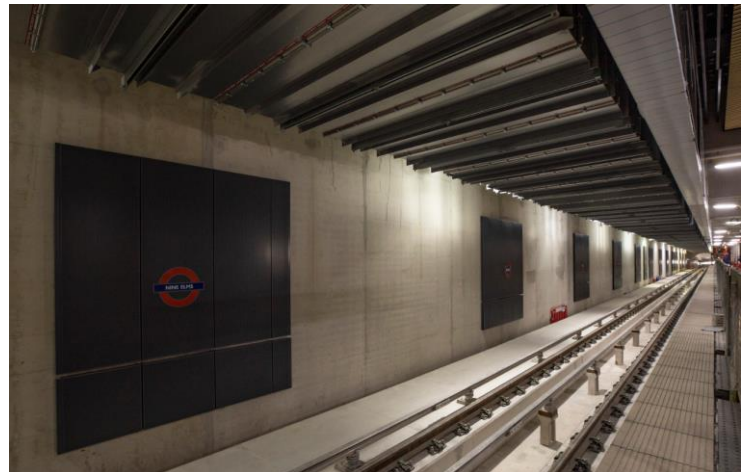


Fig. 4 Station signage and cladding at platform level

### What is planned:

Utility works commenced in January along Wandsworth Road. We expect these works to conclude mid-February which will see the bus lanes and road reinstated. Thank you for your patience while we complete this important phase of works which connect the station to the main sewer.

The enabling works to Arch 42 within Covent Garden Market have begun but we expect to actually break through the railway arch in March. Once accomplished, a pedestrian pathway and cycle route will be created from the West forming part of the landscaping works assigned to FLO. It will connect the Ballymore development next to the American Embassy with the new station.

The FLO office cabins, located at the back of site near the railway, will be re-located to the north side of site in the corner of Nine Elms Point. This operation will take place over the weekend of the 6<sup>th</sup> March. A more detailed 'Activity Notification' will be issued nearer the time.

Our core working hours are **08:00 to 18:00 Monday to Friday** and **08:00 to 13:00 Saturdays** on the surface.  
 For all activities related to fit-out, lifting and deliveries, we may also use the approved extended hours of **07:00 to 21:00 Monday to Friday** and **07:00 to 19:00 on Saturdays**.