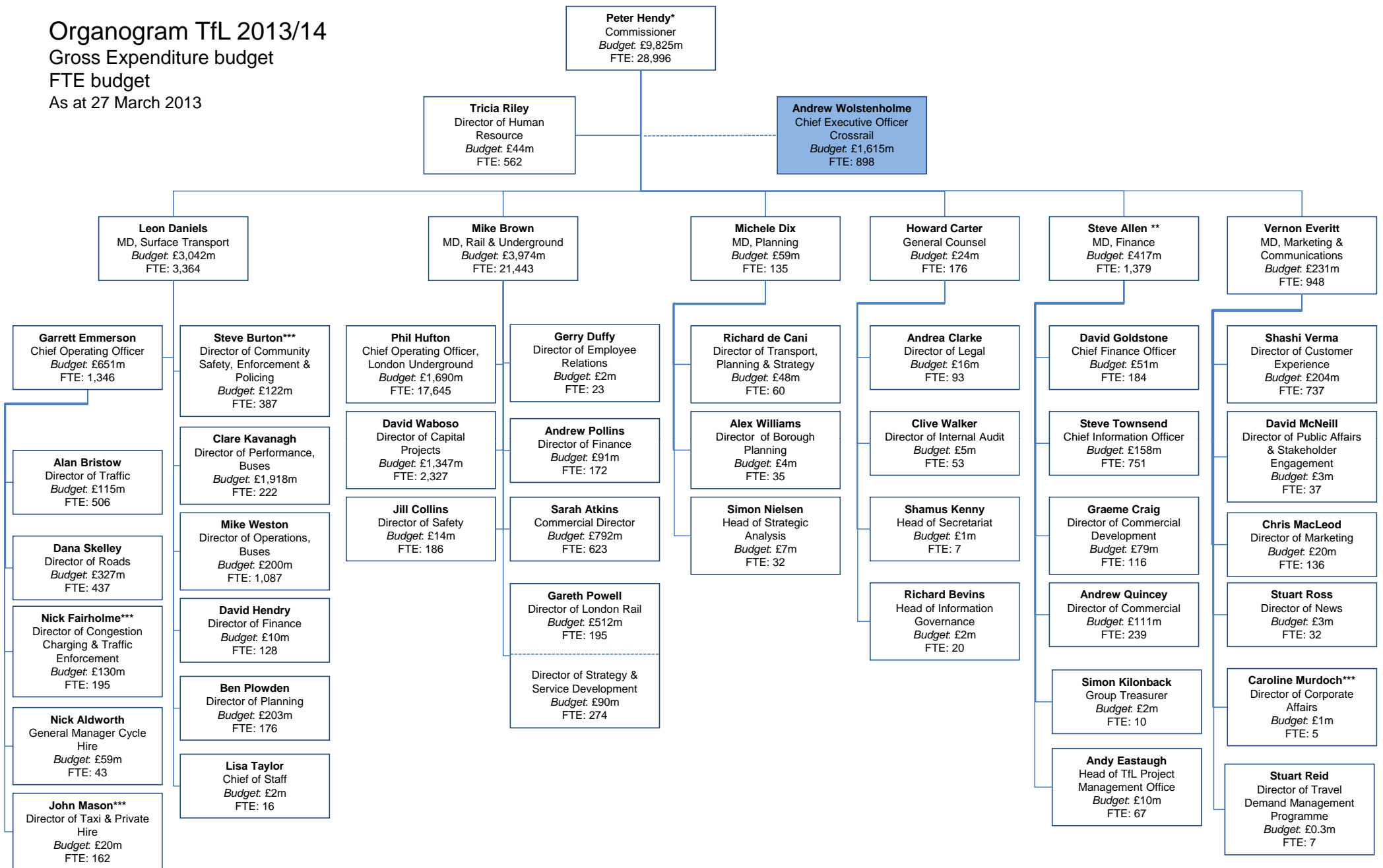


Organogram TfL 2013/14

Gross Expenditure budget

FTE budget

As at 27 March 2013



Notes

*Commissioner: Expenditure and FTE includes Crossrail

** MD, Finance: Expenditure and FTE excludes Crossrail

***Between 27 March and 1 August a number of changes of personnel and responsibilities have taken place at Director level. These are: Nick Fairholme is now Director of Projects & Programmes, Surface; Steve Burton is Director of Surface Integration Programme; John Mason is Director of CC&TE; Helen Chapman is Acting Director of T&PH and Siwan Hayward is Acting Director of CSEP. Simon Buxton is Director of Corporate Affairs.