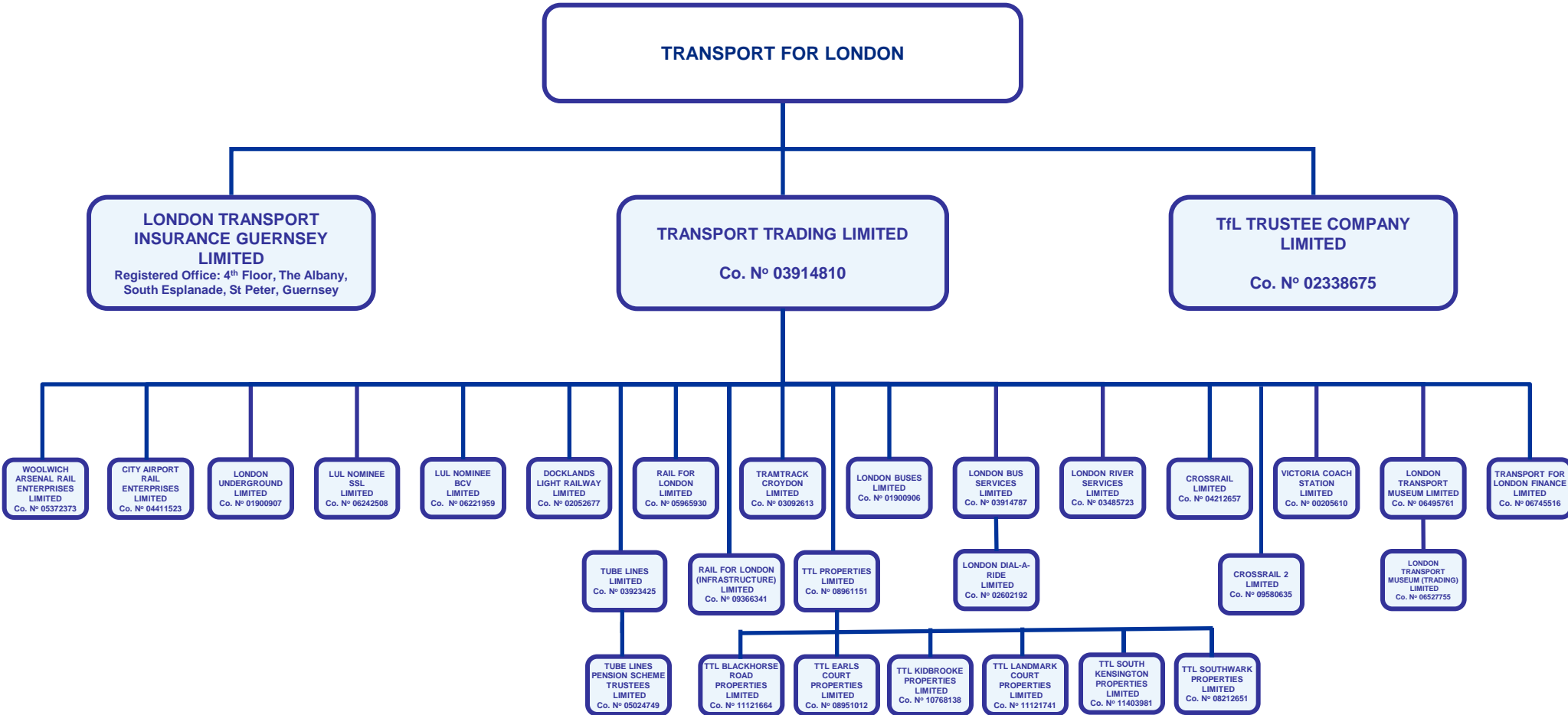


# TfL Subsidiary Company Structure



- Through London Bus Services Limited, TfL has a 25% interest in UK Tram Limited (Co. N°05554196) a company limited by guarantee.
- TTL Earls Court Properties Limited has a 37% interest in Earls Court Partnership Limited (Co. N°08872070).
- TTL Kidbrooke Properties Limited has a 49% interest in Kidbrooke Partnership LLP (OC418437)