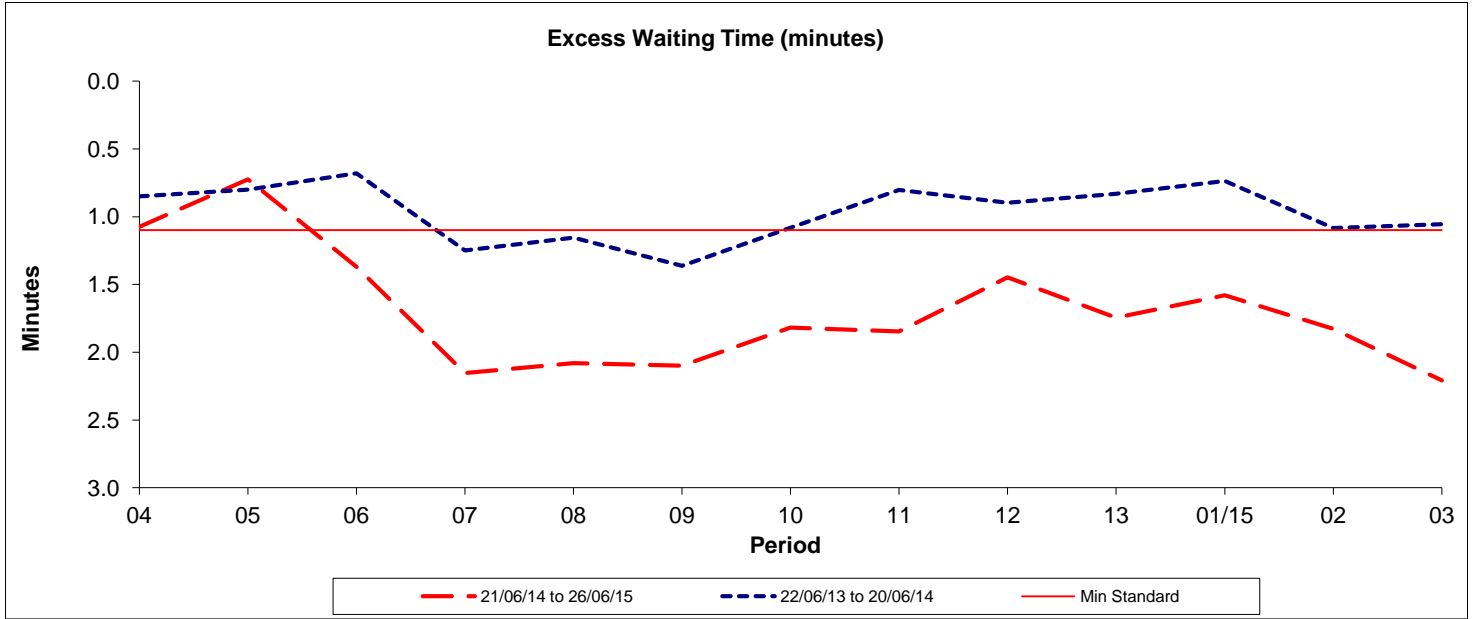




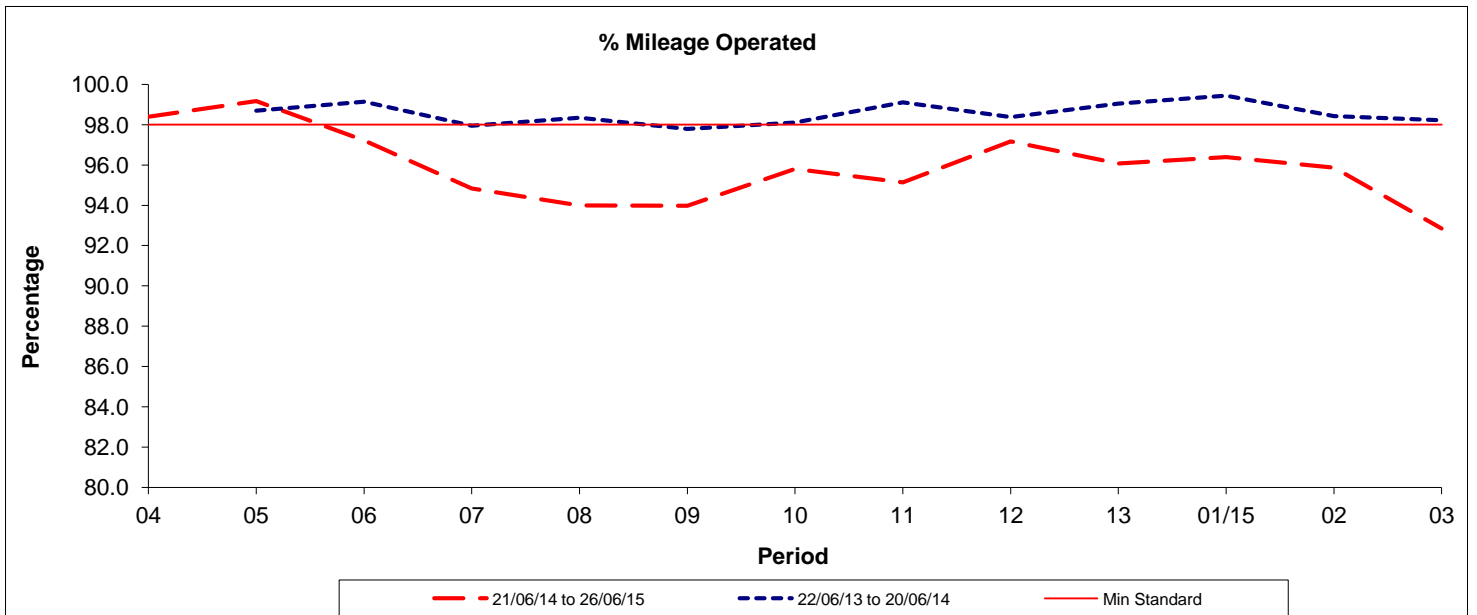
Reliability Performance (High Frequency)



Date Range / Period	04	05	06	07	08	09	10	11	12	13	01/15	02	03
21/06/14 to 26/06/15	1.07	0.72	1.37	2.15	2.08	2.10	1.82	1.85	1.45	1.75	1.58	1.83	2.21
22/06/13 to 20/06/14	0.85	0.80	0.68	1.25	1.15	1.36	1.08	0.80	0.90	0.83	0.74	1.08	1.05
Min Standard	1.10	1.10	1.10	1.10	1.10	1.10	1.10	1.10	1.10	1.10	1.10	1.10	1.10

The Excess Waiting Time figures are based on four weeks data

Mileage Performance



Date Range / Period	04	05	06	07	08	09	10	11	12	13	01/15	02	03
21/06/14 to 26/06/15	98.39	99.18	97.21	94.84	93.99	93.97	95.80	95.14	97.17	96.07	96.39	95.86	92.85
22/06/13 to 20/06/14	98.70	98.70	99.14	97.95	98.35	97.79	98.10	99.10	98.37	99.04	99.45	98.42	98.23
Min Standard	98.00	98.00	98.00	98.00	98.00	98.00	98.00	98.00	98.00	98.00	98.00	98.00	98.00

Mileage figures are based on four weeks data