

Bus route 35

Explore London's Markets

The Number 35 bus route runs from Clapham Junction in South London to Shoreditch in East London.



Start your tour at Brixton Market

BOROUGH MARKET

Borough Market

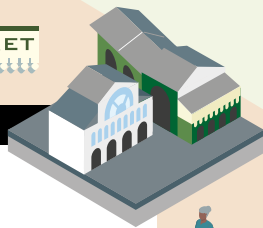
Southwark Street, SE1 1TL

Bus stop

-  Union Street
-  London Bridge

Open every day, it's one of London's oldest food markets, celebrating its 1,000th birthday in 2014. A great place for lunch, enjoy buying fresh produce from all over the world.

 London Bridge Station



Lloyd's of London

1 Lime St, EC3M 7HA

Bus stop

-  Gracechurch Street/ Monument Station

Lloyd's of London is a historic 'market' selling insurance and reinsurance that originated in the 17th century when London's growth as a trading centre led to a demand for ship and cargo insurance. Today the market insures everything from jumbo jets to nanotechnology. It has featured in many films including Mamma Mia and The Avengers.



Bus route

35

Brixton Market

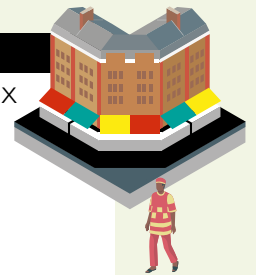
Electric Avenue, SW9 8JX

Bus stop

-  Brixton Station

Brixton Market extends over a number of streets: Reliance Arcade, Market Row and Granville Arcade (recently rebranded as 'Brixton Village') and is best known for its African and Caribbean produce.

 Brixton




BRIXTON

Leadenhall Market

Off Leadenhall Street, Gracechurch Street and Lime Street, EC3V 1LT


Bus stop

-  Gracechurch Street/ Monument Station

Leadenhall Market dates from the 14th Century. The building has a beautiful ornate roof and is Grade II listed. It is an historic and airy market that boasts a unique selection of boutiques, shops, restaurants and bars.

 Fenchurch Street



 You can walk from Leadenhall Market to Lloyd's of London in 2 minutes.

Route continues on page 2



BRICK LANE E.I.

ব্রিক লেন

Brick Lane Market

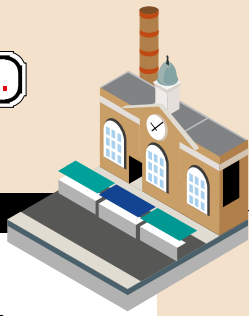
Brick Lane, E1 6PU

Bus stop

H Primrose Street

The hub of London's Bangladeshi community, **Brick Lane** is famous for its curry restaurants. The market takes place on Sundays – the great joy is you never know what you'll find there!

You can walk from Brick Lane Market to Columbia Road in 15 minutes.



- Underground station
- National Rail station
- Bus stop name
- Visitor Centre

Tube it. Bus it. Train it. To plan your journey, please download TfL Go, our real-time travel app

MAYOR OF LONDON

Spitalfields Market

Brushfield Street, E1 6AA

Bus stop

F Liverpool Street Station

H Primrose Street

Look out for street signs showing the way to Spitalfields Market – it is about a 5 minute walk from the bus stop.

Spitalfields is named after St. Mary's Spittel hospital and priory, founded in 1197. There has been a market here since 1638. Spitalfields is great for clothing, gifts, art and street food.

Liverpool Street

You can walk from Spitalfields Market to Brick Lane Market in 6 minutes, look out for quirky street art.



SPITALFIE1DS



Columbia Road Flower Market

Columbia Road, E2 7RG

Bus stop

X Shoreditch Town Hall

Columbia Road was originally a Saturday market. Today it takes place on Sundays (8am -3pm) and overflows with bucketfuls of beautiful flowers. Market traders line the narrow street selling flowers, houseplants, herbs, bulbs and shrubs.

The Flower Market is a 10 minute walk from the bus stop.



Flower Market
COLUMBIA ROAD E2
LONDON

Pay as you go at adult rate on buses and trams and our Hopper fare gives you unlimited journeys for £1.55

35

Tour ends



TRANSPORT FOR LONDON
EVERY JOURNEY MATTERS

