

# Bus route 9

## Explore London's Museums and Palaces

The Number 9 bus route runs from Aldwych in Central London to Hammersmith Bus Station in West London.

Start your tour at Somerset House

Bus route 9

### Covent Garden Market and London Transport Museum

Covent Garden, WC2E 8RF

**Bus stop**

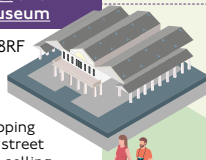
**U** Savoy Street

**Covent Garden** is a shopping mecca with exciting live street performances and stalls selling gifts, clothing and crafts.

**London Transport Museum** is a fascinating place to visit for an insight into London's transport history past, present and future.

**Covent Garden**

You can walk from Covent Garden to Trafalgar Square in 10 minutes.



### St James's Palace and Clarence House

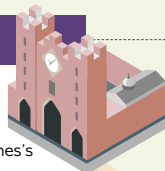
Clarence House, St James's, SW1A 1BA

**Bus stop**

**Z** Regent Street/St James's

**St James's Palace** is the London residence of several members of the Royal family.

**Clarence House** is the official residence of members of the Royal family. Enjoy guided tours and relax in the pretty gardens.



### Wellington Arch and Hyde Park Corner

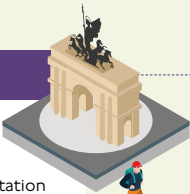
Apsley Way, Hyde Park Corner, W1J 7JZ

**Bus stop**

**M** Hyde Park Corner Station

**Wellington Arch and Marble Arch** were planned in 1825 to commemorate Britain's victories in the Napoleonic Wars. Visit the exhibition and enjoy views of the surrounding area from the top.

**Hyde Park Corner**



### Somerset House

Strand, WC2R 1LA

**Bus stop**

**H** Aldwych/Bush House

**Somerset House** is an exciting centre for the visual arts. Visit the Courtauld Gallery to see some stunning Impressionist and Grand Master paintings.

You can walk from Somerset House to Covent Garden in 8 minutes.



### Trafalgar Square

WC2N 5DN

**Bus stop**

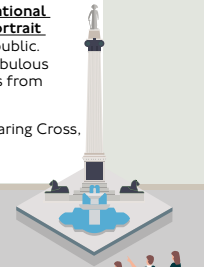
**H** Charing Cross Station

**S** Trafalgar Square

**Trafalgar Square** commemorates the Battle of Trafalgar, a British naval victory in the Napoleonic Wars with France and Spain that took place on 21 October 1805.

Located at the north side of Trafalgar Square, **The National Gallery** and **National Portrait Gallery** are free to the public. These galleries house fabulous paintings and sculptures from around the world.

**Trafalgar Square, Charing Cross, Embankment, Charing Cross**



### Green Park

SW1A 1BW

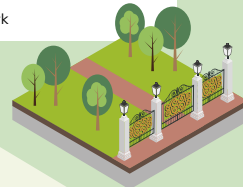
**Bus stop**

**H** Green Park Station

**E** Green Park/Constitution Hill

**Green Park** is a peaceful triangle of mature trees and grasslands featuring a range of memorials, fountains and statues. It offers a quiet retreat from city life, right next to Buckingham Palace.

**Green Park**



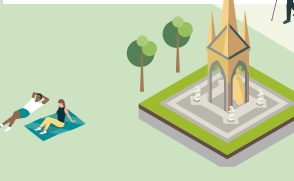
Route continues on page 2



**The Albert Memorial**

**Bus stop**  
**RC** Royal Albert Hall

The **Albert Memorial** is situated opposite the Royal Albert Hall in Kensington Gardens. It was commissioned by Queen Victoria in memory of her beloved husband, Prince Albert who died of typhoid in 1861.



**The Design Museum**

224 - 238 Kensington High Street, W8 6AG  
**Bus stop**  
**X** The Design Museum

The **Design Museum** is dedicated to the world of product, industrial, graphic, fashion and architectural design. The main collection is free to visit.

**U** High Street Kensington

The museum is a short 10 minute walk from the bus stop.



**Natural History Museum, Victoria and Albert Museum, Science Museum and the Royal Geographical Society**

**Bus stop**  
**RB** Exhibition Road

Some of London's most famous museums are located along Exhibition Road.

- The Natural History Museum
  - The Victoria and Albert Museum
  - The Science Museum
  - The Royal Geographical Society
- U** South Kensington

These museums are all 10 minutes walk from the bus stop



**Kensington Palace**

Kensington Gardens, W8 4PX  
**Bus stop**  
**N** Kensington Palace

**Kensington Palace** has been a residence of the British Royal Family since the 17th century, and is the official London residence of The Duke and Duchess of Cambridge and their children. The State Rooms are open to the public.

**U** Notting Hill Gate, Queensway



**Holland Park**

W8 6LU  
**Bus stop**  
**X** The Design Museum  
**Z** Warwick Gardens

For a relaxing end to your tour, **Holland Park** covers 54 acres and includes two peaceful Japanese gardens.



**9**

Tour ends

- U** Underground station
- R** National Rail station
- X** Bus stop name

Pay as you go at adult rate on buses and trams and our Hopper fare gives you unlimited journeys for £1.55

Tube it. Bus it. Train it. To plan your journey, please download TfL Go, our real-time travel app

MAYOR OF LONDON

