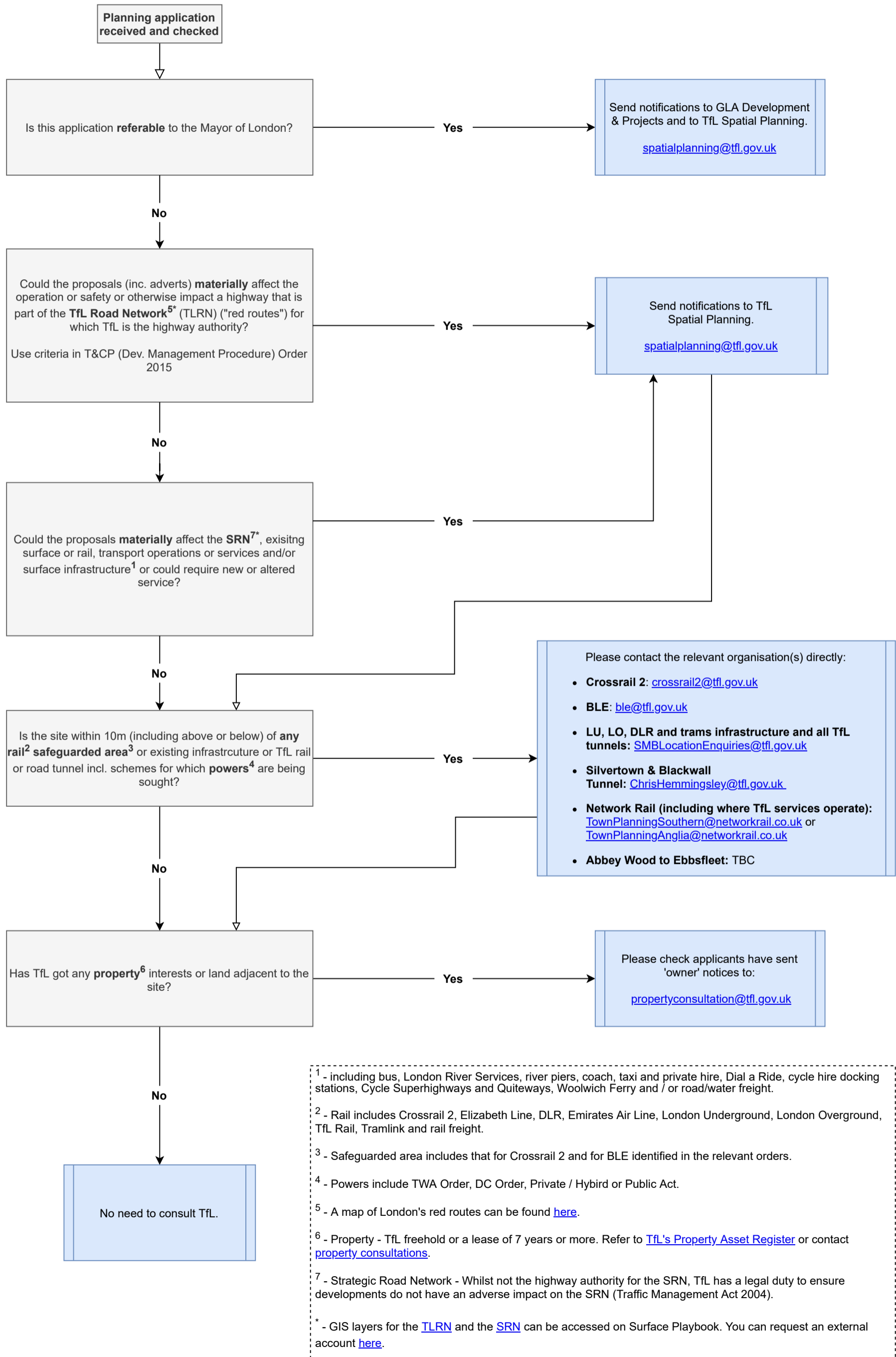


Planning Applications

Who to consult at TfL and when.



¹ - including bus, London River Services, river piers, coach, taxi and private hire, Dial a Ride, cycle hire docking stations, Cycle Superhighways and Quietways, Woolwich Ferry and / or road/water freight.

² - Rail includes Crossrail 2, Elizabeth Line, DLR, Emirates Air Line, London Underground, London Overground, TfL Rail, Tramlink and rail freight.

³ - Safeguarded area includes that for Crossrail 2 and for BLE identified in the relevant orders.

⁴ - Powers include TWA Order, DC Order, Private / Hybrid or Public Act.

⁵ - A map of London's red routes can be found [here](#).

⁶ - Property - TfL freehold or a lease of 7 years or more. Refer to [TfL's Property Asset Register](#) or contact [property consultations](#).

⁷ - Strategic Road Network - Whilst not the highway authority for the SRN, TfL has a legal duty to ensure developments do not have an adverse impact on the SRN (Traffic Management Act 2004).

* - GIS layers for the [TLRN](#) and the [SRN](#) can be accessed on Surface Playbook. You can request an external account [here](#).