

Surface Transport Panel

Date: 11 February 2015

Item: Update On Night Bus Network Crime Figures

This paper will be considered in public.

1 Summary

1.1 The Surface Transport Panel at its meeting on 9 July 2014 requested an update on crime figures for the night bus network.

2 Recommendation

2.1 **That the Panel notes the paper.**

3 Background

3.1 London's Bus network is a safe, low crime environment. The risk of becoming a victim of crime is low and has been getting lower over recent years. In real terms, the network has never been safer than it is today.

3.2 Crime levels on the network, including both the volume of crime and rate of crime per million passenger journey, are at a record low. The rate of crime continues to fall, with levels about half of what they were in 2005/06 when crime levels peaked.

3.3 Further reductions in crime will be delivered through TfL's continued investment in transport and roads policing, and TfL's own enforcement and advisory activities focused on prevention, problem-solving and partnership.

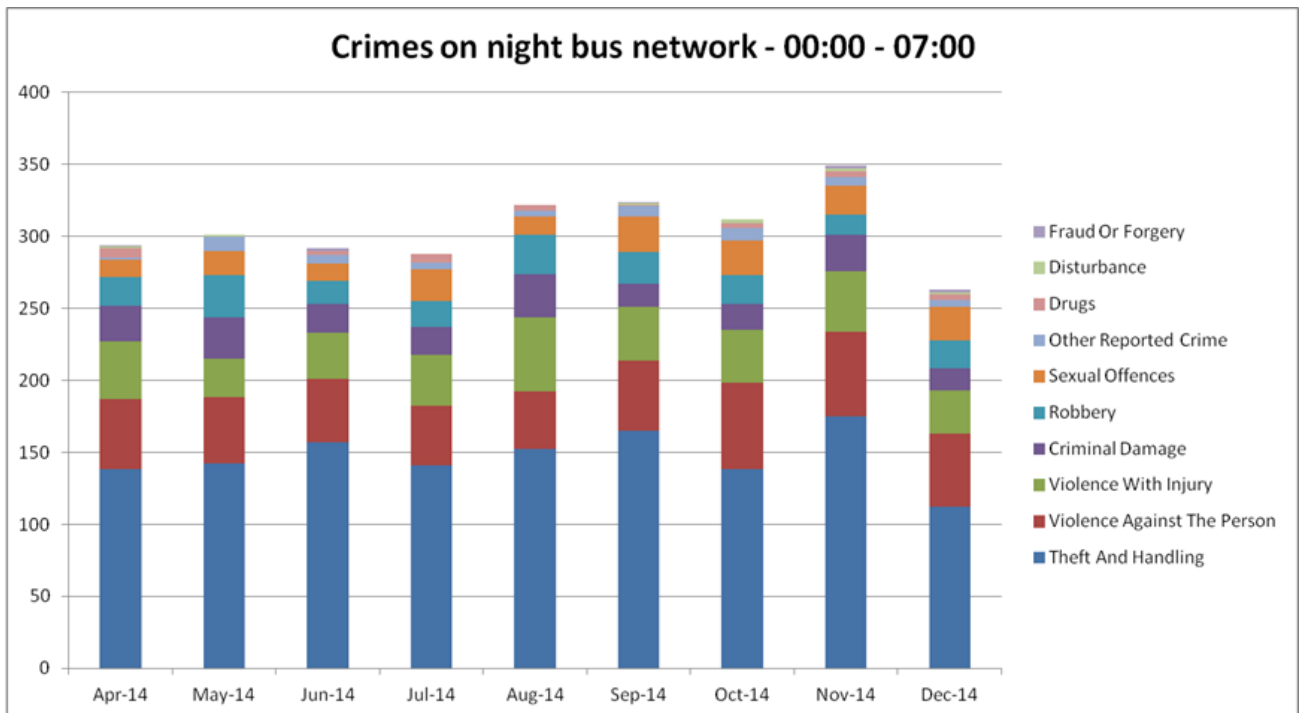
4 Crime on the Night Bus Network

4.1 The crime figures in this paper for the night bus network include all bus related crimes reported to the Metropolitan Police Service (MPS) that occurred between the hours of midnight and 07:00. These are not official bus-related crime figures but provide a reliable indication of the levels of crime on the night bus network.

4.2 Around 20 per cent of all bus-related crime is committed between the hours of midnight and 07:00. There were around 2,700 offences committed on the night bus network over the nine month period. Around half of all crime committed between these hours is theft and handling offences. Serious violent crime is rare.

4.3 Crime on the night bus network between April and December 2014 was 16 per cent lower than the same period in the previous year (521 fewer offences).

4.4 The chart below shows the bus related crime rates per million passenger journeys on the night bus network for the nine month period April-December 2014. The category of violence against the person includes harassment offences and assault, such as spitting and abuse experienced by bus drivers.



4.5 Officers in the joint TfL/MPS-funded Roads and Transport Policing Command are deployed across the bus network to provide greater coverage and visibility on night buses, and to undertake targeted operations to deal with night bus issues.

List of appendices to this report:

None

List of Background Papers:

None

Contact Officer: Steve Burton, Director of Enforcement on On-Street Operations
 Number: 0203 054 0755
 Email: steve.burton@tfl.gov.uk