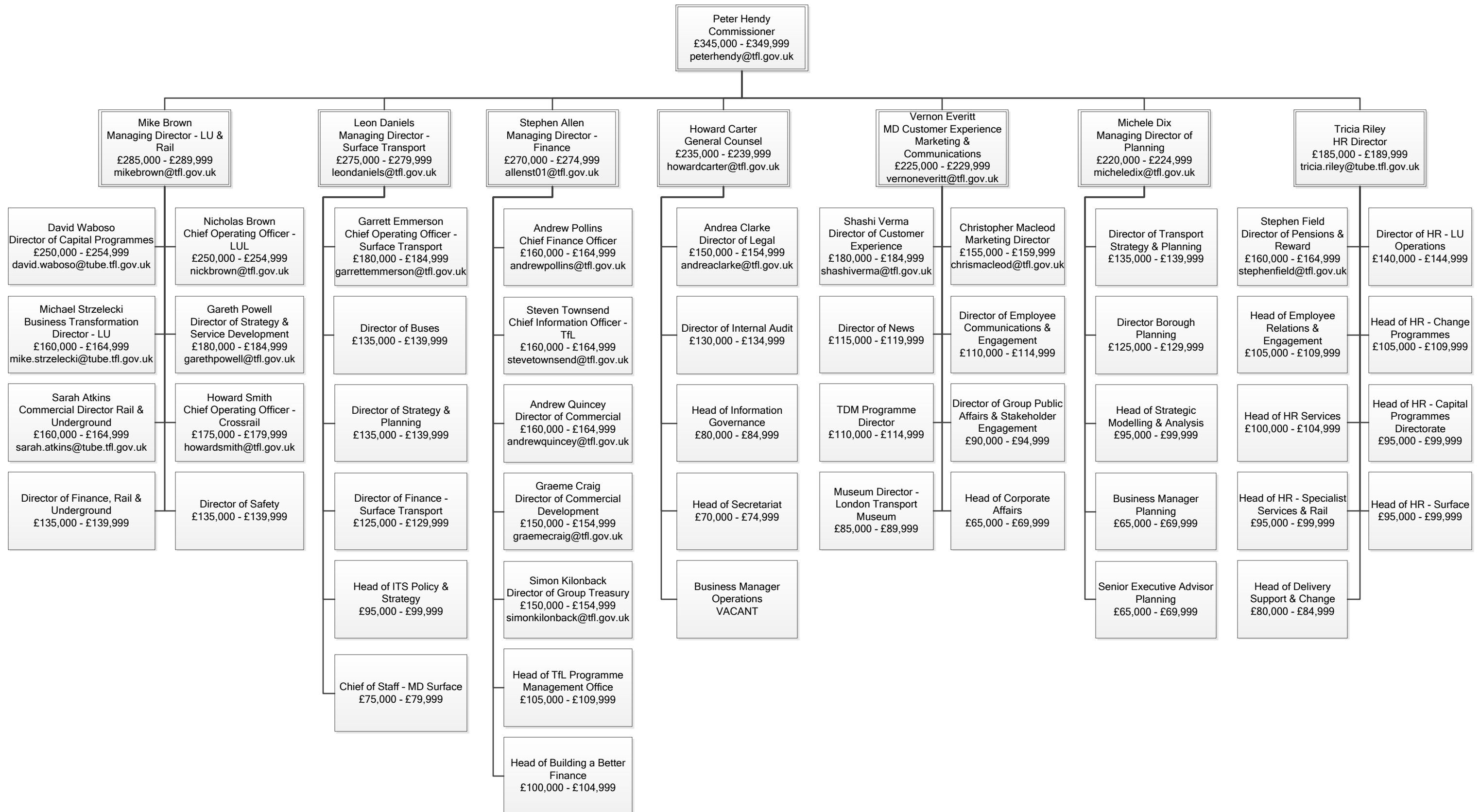


# Transport for London Organisational Chart 2014/2015



**Notes**  
 \*This data is correct as at 19 January 2015.  
 \*\*All positions shown are permanent.  
 \*\*\*Remuneration for Directors and Chief Officers at TfL is determined on an individual basis. Remuneration packages for Chief Officers are subject to the approval of the TfL Remuneration Committee. The policy of TfL is to provide remuneration packages which attract, retain and motivate individuals of the high calibre required to manage such a large, complex organisation. Remuneration packages for Directors and Chief Officers reflect their responsibilities, experience and performance and the market from which TfL recruits.